

LiveQUICK software for Flashback 3

Laser shows made easily and quickly

Pangolin's LiveQUICK is an easy-to-use program that can be used along with the Flashback 3 Laser Controller. LiveQUICK allows you to create stunning laser frames and scenes, including as well as import Pangolin and ILDA animations.

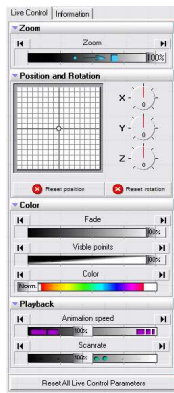
The LiveQuick Program allows you to:

- Trigger cues by clicking on buttons with the mouse or touch screen,
- Have live control of several parameters during cue playback,
- Create and edit the frames and animations on line (real time editing),
- Make Geometric correction in four separate "zones" of control,
- Change the settings to be used in standalone mode (autostart),
- Upload frames or complete animations to the Flashback 3 board.

Triggering cues

You can create 48 cues in each of 9 workspace pages. Each cue can be a word, logo, graphic, animation, beam effect or even a complete show. You can control the Flashback 3 "Live" using the built-in control features. Live changes can be seen on the Laser preview screen and on the projector output. The LiveQuick program allows Live control over:

- Size
- X Position
- Y Position
- X Rotation
- Y Rotation
- Z Rotation
- Brightness
- Visible points
- Color wheel
- Animation speed
- Scan rate



Later, if you need more power, LivePRO can be used. The similar user interface shared by both LiveQUICK and LivePRO makes the learning curve reduced.

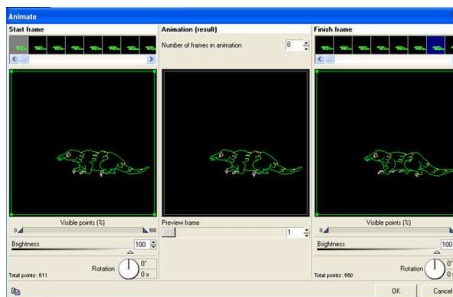
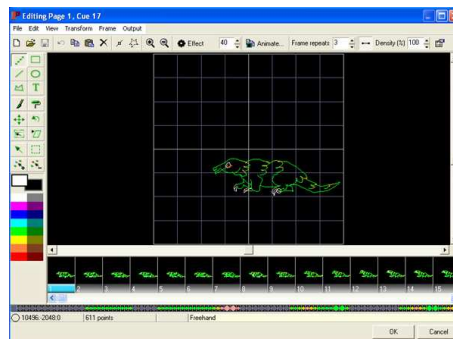
Creating, editing and importing

Cues can be created and edited on the built in Editor. Familiar tools such as line, shapes, free-hand or text are used to create or modify frames.

A background image can be used to trace your images

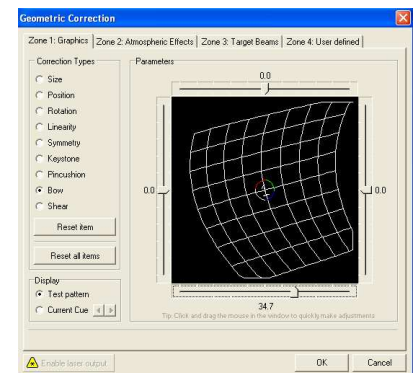
Those frames can be animated with a start and end frame, or with effects such as rotate, zoom, or fade.

Imported frames created with LD 2000 can be turned into animations with a few mouse clicks.



Geometric correction zones

Livequick can project in many different shaped surfaces and angles. Four separate zones can have it's own settings for a perfect layout distribution.



Standalone Mode

LiveQuick can configure the Flashback 3 to work by itself, playing a show sequence pre-programmed upon power up - no computer necessary for playback!

Using LiveQUICK, you can specify a cue or sequence of cues to start playing automatically upon power-up. The cue or sequence can play once or continuously.

